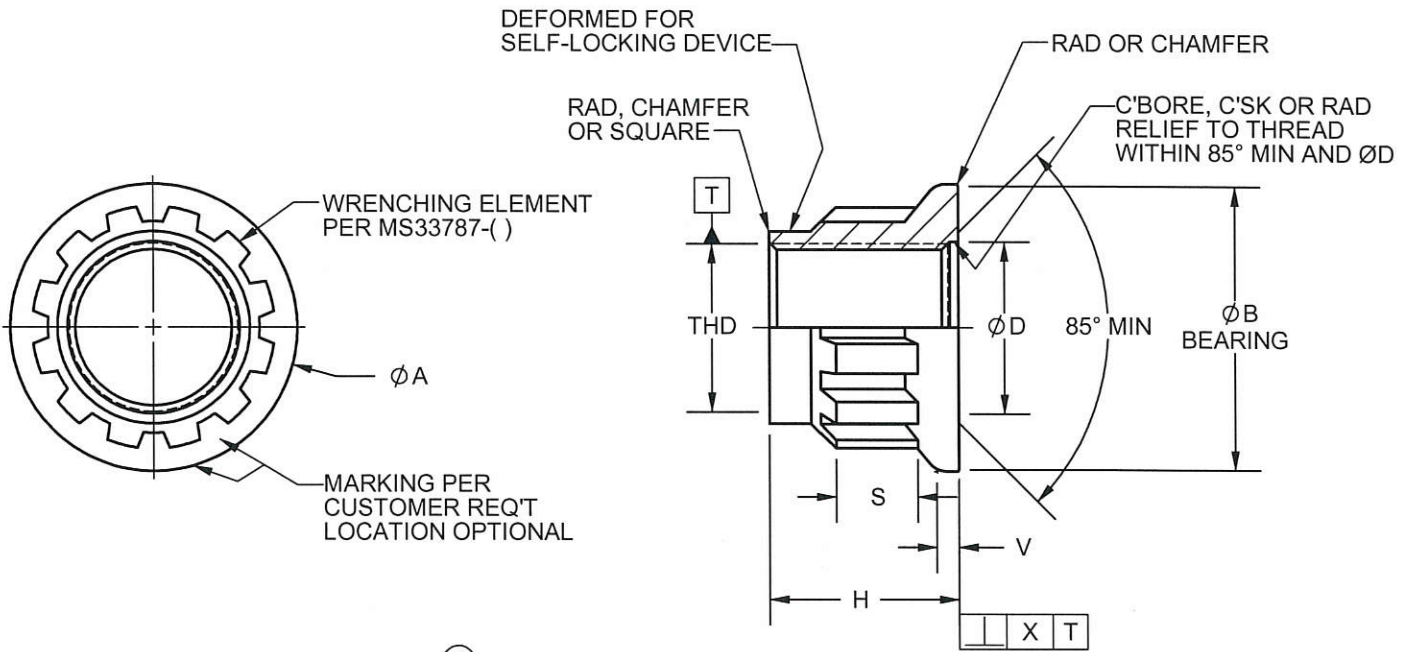


OPTIONAL PROFILE



(4)

DASH No.	THREAD SIZE PER AS8879	MS33787 ELEMENT NUMBER	ØA MAX	ØB MIN	ØD	H MAX	S MIN	V MIN	X	AXIAL TENSILE STRENGTH LBS MIN	APPROX WEIGHT LBS/ 100
3	.1900-32UNJF-3B	8	.362	.322	.190-.220	.220	.089	.023	.003	4,970	.27
4	.2500-28UNJF-3B	10	.460	.420	.250-.280	.290	.110	.033	.003	8,870	.53
5	.3125-24UNJF-3B	12	.563	.522	.312-.342	.360	.147	.038	.003	14,100	.92
6	.3750-24UNJF-3B	14	.669	.629	.375-.405	.430	.176	.045	.003	20,900	1.47
7	.4375-20UNJF-3B	18	.773	.733	.438-.473	.500	.206	.053	.003	28,300	2.52
8	.5000-20UNJF-3B	20	.879	.839	.500-.535	.575	.235	.060	.003	37,800	3.67
9	.5625-18UNJF-3B	22	.982	.942	.562-.597	.650	.264	.068	.004	47,900	5.04
10	.6250-18UNJF-3B	24	1.088	1.048	.625-.660	.720	.294	.075	.004	59,900	6.61
12	.7500-16UNJF-3B	30	1.296	1.256	.750-.785	.860	.353	.090	.004	86,900	11.50
14	.8750-14UNJF-3B	34	1.505	1.465	.875-.910	1.000	.411	.105	.005	119,000	17.75
16	1.0000-12UNJF-3B	38	1.720	1.670	1.000-1.035	1.150	.470	.120	.006	155,000	26.25

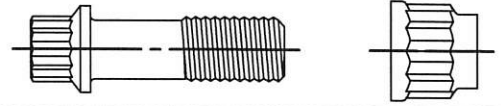
(4)

TOLERANCES UNLESS OTHERWISE SPECIFIED: DECIMAL ±.015 ANGLES ±2° VENDOR CAGE CODE No. 27238

**BRISTOL INDUSTRIES 630 EAST LAMBERT RD. BREA, CALIFORNIA 92821 (714) 990-4121**

 TITLE  
 NUT-SPLINE, SELF-LOCKING, SPLINE DRIVE,  
 220 KSI, 450°F & 800°F

 PART NO.  
 BH14182



MATERIAL: INCO 718 PER AMS5662 OR AMS5663.

FINISH: BH14182L( ) = DRY FILM LUBRICANT PER AS5272, TYPE I, NICKEL OR COPPER STRIKE  
AS A PRETREATMENT FOR THE APPLICATION OF SOLID DRY FILM IS OPTIONAL.

BH14182P( ) = CADMIUM PLATE PER AMS-QQ-P-416, TYPE II, CLASS 2.

BH14182S( ) = SILVER PLATE PER AMS2410 (.0003-.0005 THICKNESS - THREADS ONLY).

PERFORMANCE: NASM85730, EXCEPT AS FOLLOWS:

- A) TEST BOLTS FOR STRESS DURABILITY, TORQUE EFFECTIVITY, LOCKING TORQUE, STRESS CORROSION, ACCELERATED VIBRATION SHALL BE NICKEL ALLOY 718, 220 KSI MIN ULTIMATE TENSILE STRENGTH. DRY FILM LUBRICATED AND SILVER PLATED NUTS SHALL BE TESTED WITH UNPLATED BOLTS PASSIVATED IN ACCORDANCE WITH AMS2700, METHOD 1, CLASS 4. CADMIUM PLATED NUTS SHALL BE TESTED WITH CADMIUM PLATED BOLTS.
- B) FOR TORQUE EFFECTIVITY, REUSABILITY OF DRY FILM LUBRICATED NUTS SHALL BE LIMITED TO FIVE (5) CYCLES.
- C) FOR WRENCHING TORQUE, BOLTS SHALL BE 260 KSI MINIMUM.
- D) BAKING TEMPERATURE FOR TORQUE EFFECTIVITY, VIBRATION, AND STRESS DURABILITY SHALL BE 800°F. FOR DRY FILM LUBRICATED NUTS AND CADMIUM PLATED NUTS BAKING TEMPERATURE SHALL BE 450°F.

NOTES:

- 1 SURFACE TEXTURE: BEARING SURFACE  $\sqrt{125}$ .
- 2. DIMENSIONS APPLY BEFORE LUBRICATION.
- 3. PART BH14182L( ) EQUIVALENT TO PART MS14182L( ).  
PART BH14182P( ) EQUIVALENT TO PART MS14182P( ).  
PART BH14182S( ) EQUIVALENT TO PART MS14182S( ).

TOLERANCES UNLESS OTHERWISE SPECIFIED: DECIMAL ±.015 ANGLES ± 2° VENDOR CAGE CODE No. 27238

**BRISTOL INDUSTRIES 630 EAST LAMBERT RD. BREA, CALIFORNIA 92821 (714) 990-4121**

TITLE  
**NUT-SPLINE, SELF-LOCKING, SPLINE DRIVE,  
220 KSI, 450°F & 800°F**

PART NO.  
**BH14182**

SHEET 2 OF 2

EPN:

**MASTER**

APPROVED DATE: R.M.Q. 11/2/1995 / A.H. 11/2/1995  
REVISED MICHELLE H. 6/6/2016  
④ Wong N. 6/10/16